

The Complete
Signage, Shop Fitting &
Display Solutions



Unit 3, Hytech Industrial Estate,
61 Collingham Street, Manchester
M8 8RQ United Kingdom
0161 850 9594 | contact@clarityLED.co.uk



PDF Catalogue



ClarityLED.co.uk

The image shows a modern cafe interior. A long, tufted pink velvet sofa runs along a wall with green paneled wallpaper. In front of the sofa are several square marble-top tables with gold frames. Matching pink chairs with gold frames are tucked under the tables. The floor has a black and white geometric pattern. A large pink floral garland hangs from the ceiling, and a gold chandelier is visible in the top left. A green banner with white text is overlaid on the image.

The Complete Signage,
Shop Fitting & Display Solutions

Contents

Our Story	4
Shop Fittings & Display	5
Large Format Printing	14
3D and Fret Cuts Signs	18
Promotional Signage	26
LED Neon Signs	28
Vehicle Graphics	30
Digital Signage & Display System	32
WoodPanel	36

OUR STORY

Clarity Group UK

Pioneer in cutting-edge technology and design for over a decade. Specializing in digital signage solutions that captivate and impress, we bring your vision to life. With dedication and creative passion, we've become industry leaders in various sectors, setting new benchmarks.

Clarity LED & Digital Signage Solution

We offer a one-stop shop for comprehensive signage services, from concept to maintenance. Our capabilities include large format UV printing for vibrant, durable graphics and precision CNC cutting. We create lasting impressions and seamless communication.

Clarity Event Management

We construct memorable exhibitions that elevate brands and engage audiences. Our passion for innovation and excellence ensures your exhibition stands out, creating brand experiences.

Shop Fitting & Display

We transform spaces into exceptional, functional environments. We pride ourselves on precision, quality, and functionality, evident in our workspaces, retail spaces, and residences.

WoodPanel.co.uk

Explore our sustainable Wood Panel product line, creating inviting indoor environments with MDF decorative panels. We offer a variety of designs and styles to cater to your unique needs.

Our vision is to turn your ideas into reality, pushing boundaries and making dreams come true. **DREAM BIG, WE'RE HERE** to bring your vision to life.

Shop Fittings & Display

We specialise in the seamless transformation of spaces, turning them into exceptional and highly functional environments. Our commitment to excellence is evident in every aspect of our work.

Our approach goes beyond traditional design and construction. We offer comprehensive turnkey solutions for shop fittings.





Craftsmanship
in Every Joint

Timeliness in
Every Project







Benefit from our expert consultation services, helping you choose the right fittings to enhance your store's functionality and aesthetics.







Discover the flexibility of our modular fittings, allowing you to adapt and transform your store layout with ease.





Large Format Printing

Experience the brilliance of UV printing. We offer high resolution UV Flat bed large format and direct printing services with fast turnaround. Make your message stand out with stunning clarity and durability.

We have a wide range of print material options:

- Foamalux PVC sheet
- Dibond Aluminum Composite Panels (ACP)
- Correx Corrugated Plastic
- Plexiglass / Acrylic
- Outdoor Posters & Banners
- Roll-up Banner Stands
- Vinyl and PVC Posters
- Various Fabrics

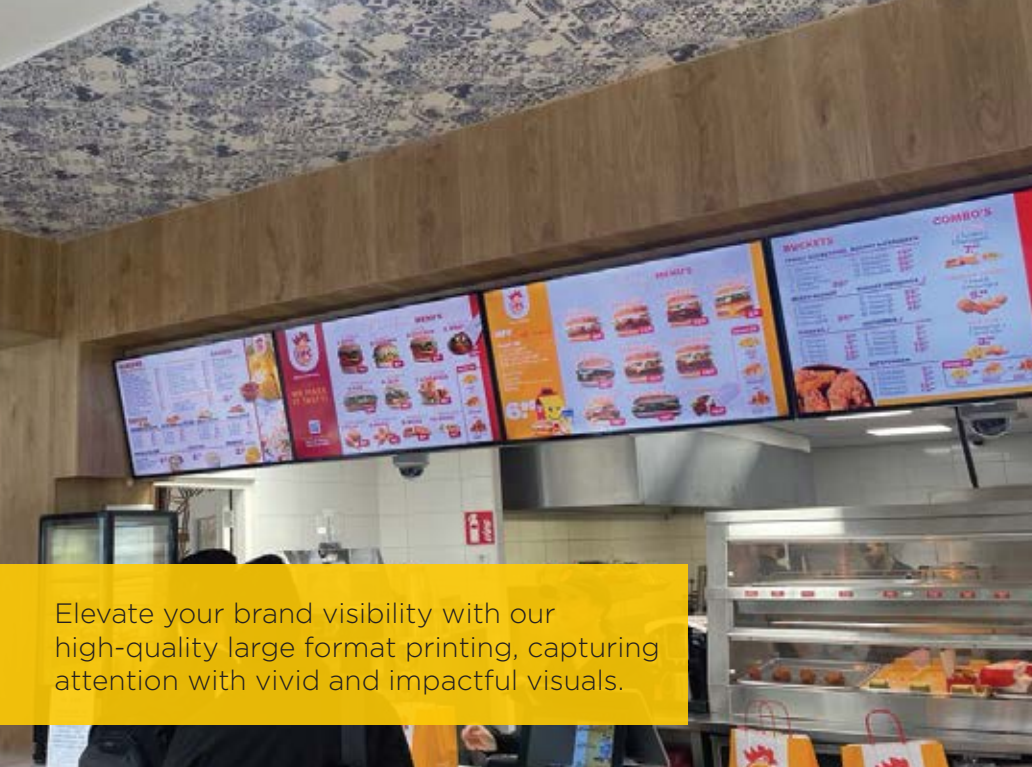
Whatever your printing needs, we've got you covered.

Experience the dynamic possibilities of UV flatbed prints, ensuring your designs come to life with striking colors and durable finishes.

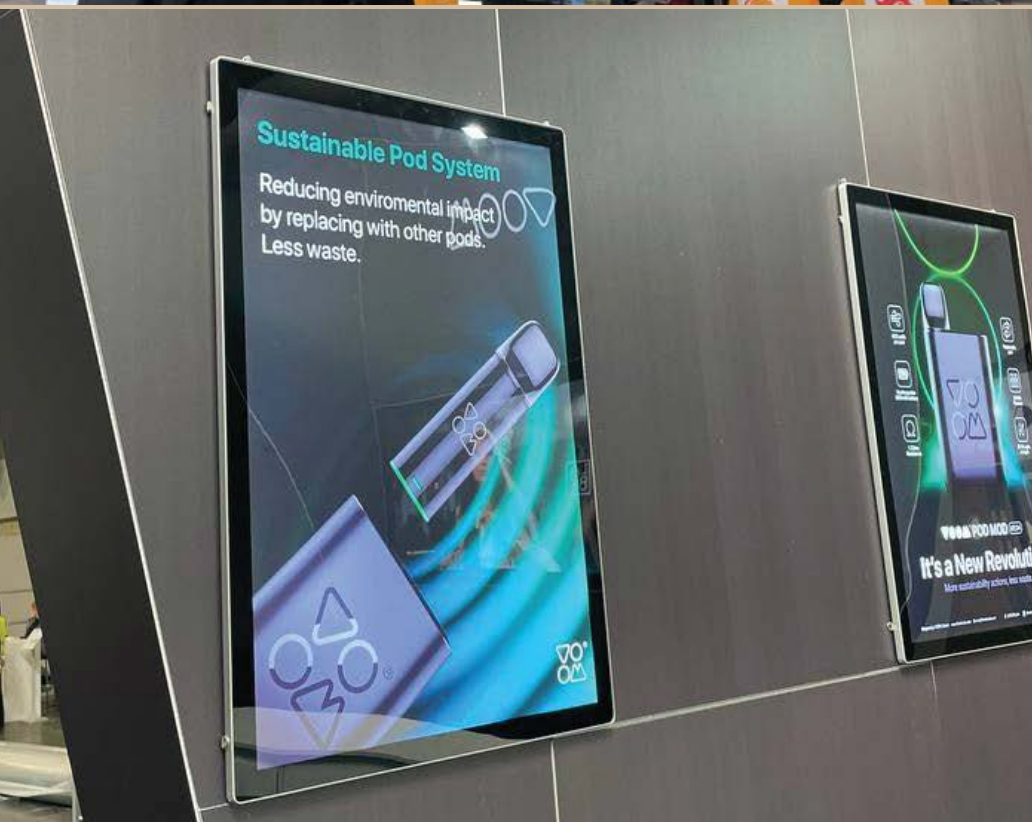








Elevate your brand visibility with our high-quality large format printing, capturing attention with vivid and impactful visuals.



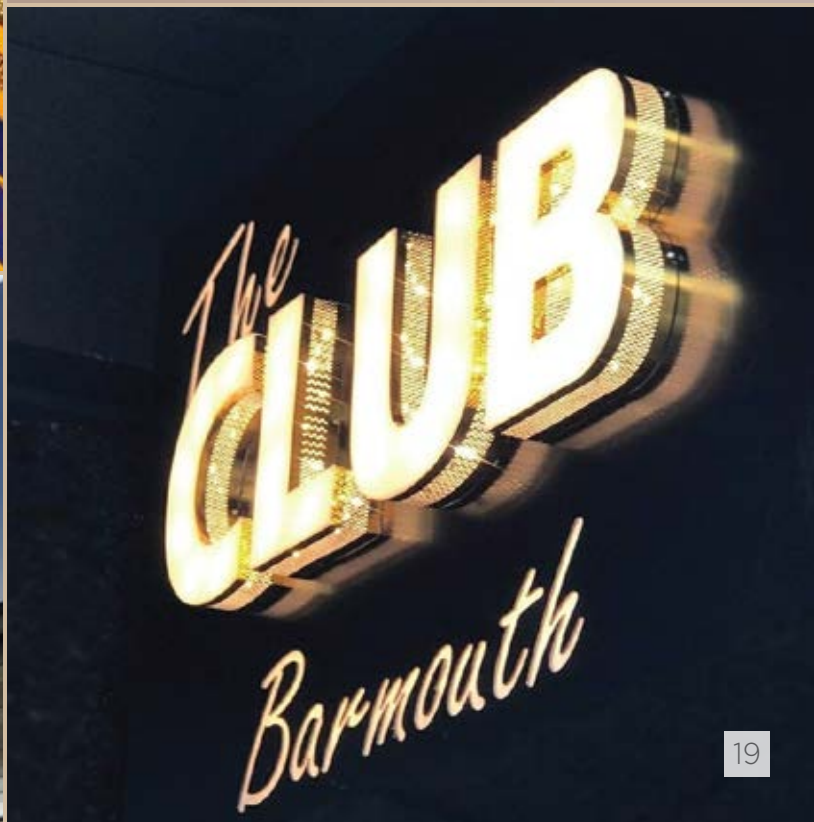
3D and Fret Cut Signs

3D Channel Letter signs are always a popular choice for business owners, offering both aesthetic appeal and high visibility, day or night. We utilise Korean Samsung LED modules to illuminate 3D Channel Letters, ensuring top-notch quality.

3D Channel Letters offering a unique style and design:

- Front-lit
- Back-lit
- Open Face
- Rim & Return
- Trimless

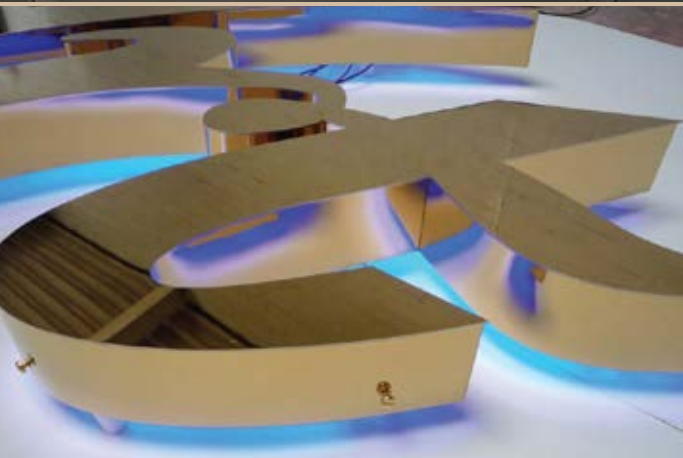








Illuminate your brand with our 3D signs, combining creativity and functionality to make your business stand out day and night.









Learn about the durability of our vinyl graphics, designed to withstand various environmental factors while maintaining visual appeal.





Projected Light Box
Double Faced



Promotional Signage

Amplify your brand's impact with our Promotional Advertising Displays, designed to captivate and engage your audience, wherever you are.

- Promotional Advertising Displays
- Outdoor Display Stands
- Cafe Banners
- Printed Tents
- Flags and Banners
- A-Board Signs
- Lightbox Posters
- Outdoor Display Banners
- Wall-Mounted Banners
- Lamp Post Flag Banners
- Hanging Circle Displays
- Pavement Boards

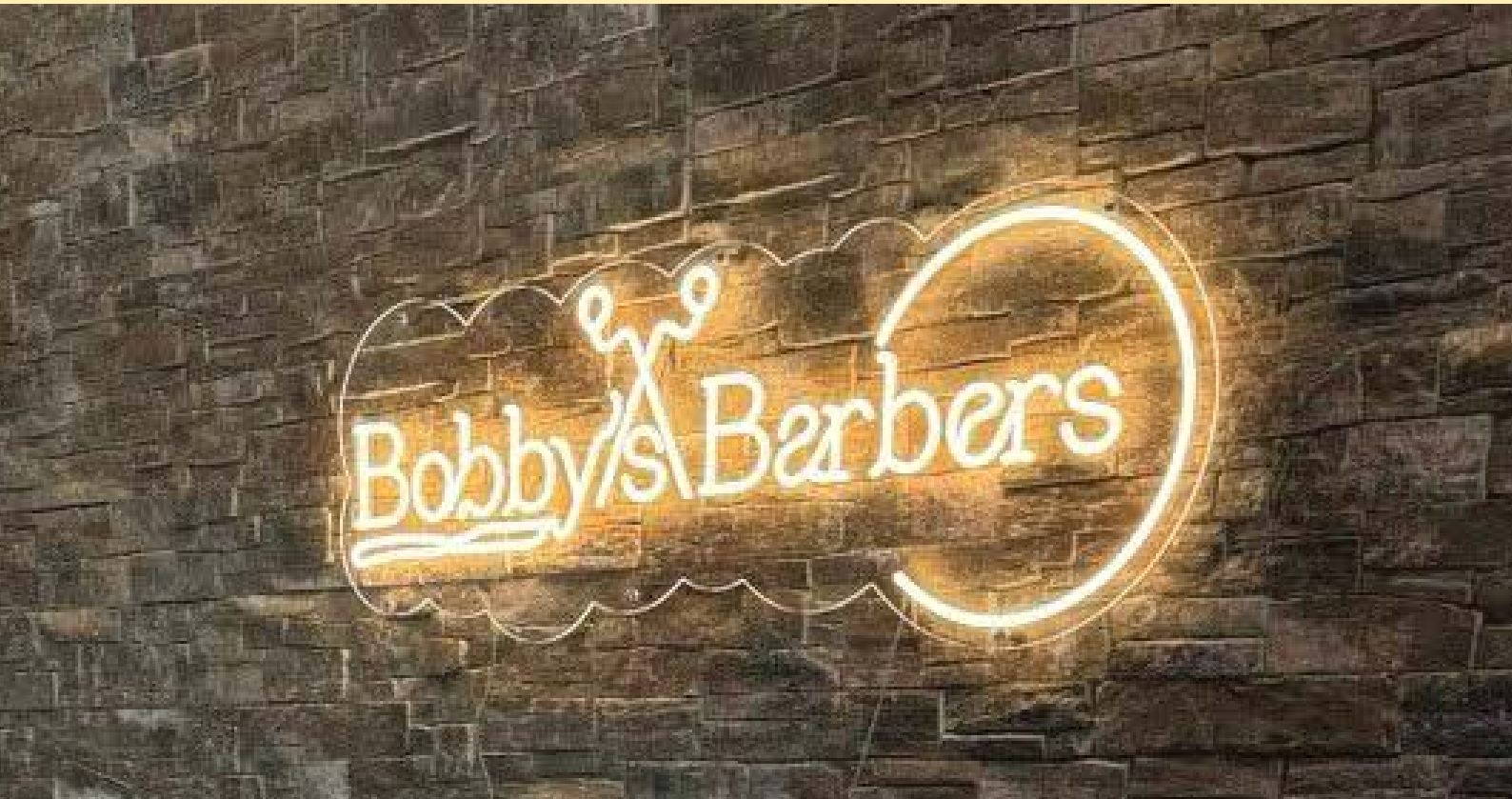




LED Neon Signs

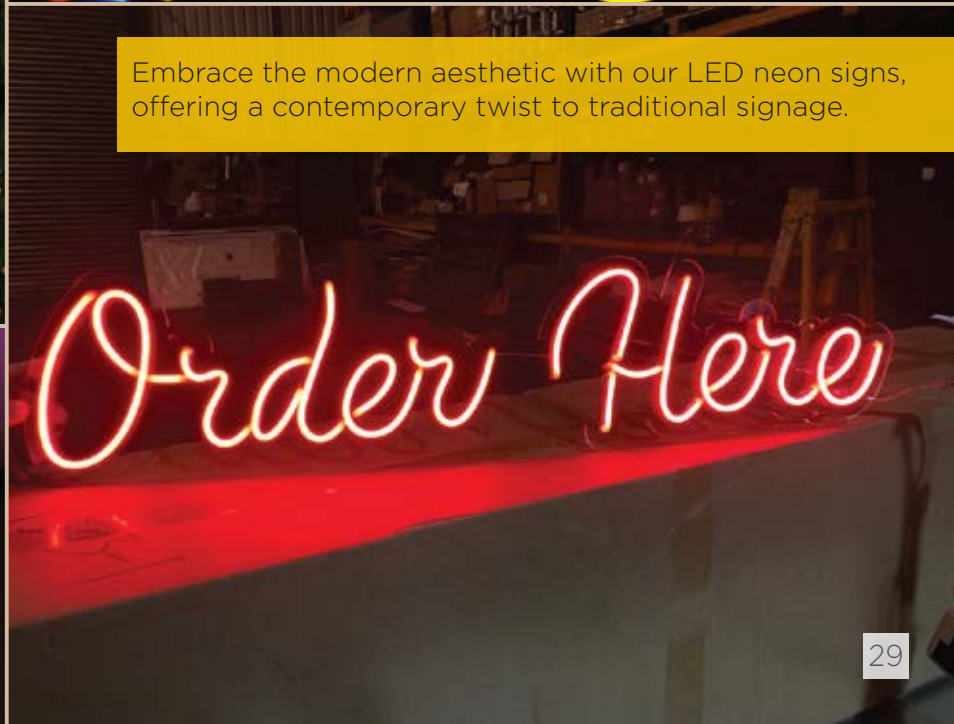
Our LED Neon signs, constructed from durable acrylic and vibrant LEDs, offer the same stunning effect and visual impact as traditional neon signs.

- Cost-effective
- Brilliantly bright
- Versatile design
- Energy-efficient
- Safe to use at 12V power
- Wall mounted or ceiling suspended





Embrace the modern aesthetic with our LED neon signs, offering a contemporary twist to traditional signage.



Vehicle Graphics

Maximise Visibility and Boost Sales through Vehicle Graphics. If you're eager to harness the power of a mobile advertising platform, allow us to transform your vehicle with our tailored services:

- Vehicle Graphics
- Vinyl Lettering
- Digitally Printed Car Signage
- Car Roof-Top Signs
- Complete Vehicle Wrapping
- Fleet Vehicle Graphics
- Magnetic Vehicle Signage
- Van Signage





Digital Signage & Display System

Discover the future of advertising with our LED Digital Sign. Designed for captivating a larger customer base.

Say goodbye to the hassle of replacing the entire board each time you want to update your offers. With our user-friendly Mobile APP program, you can effortlessly showcase new promotions.





SAMSUNG

SAMSUNG

LAKELAND

LAKELAND







WoodPanel.co.uk

Our WoodPanel comprises MDF decorative panels that can create a warm and inviting environment in any indoor space. These panels are made from high quality MDF, known for its durability and sustainability.

Our WoodPanel products are available in a wide variety of stunning wood grains and colours, which are carefully crafted to ensure a unique and visually appealing installation every time.

Our panel designs and styles cater to the diverse needs of our clients, which includes smooth panels, grooved panels, and three-dimensional textured panels, available in a range of sizes and finishes.

We are committed to working closely with our clients to create beautiful and natural spaces that leave a lasting impression.

To learn more about our WoodPanel products, please visit our website.



PDF Catalogue





Luminar Skirting Board

Elevate your space with a sophisticated and practical addition to your interior design.





Transform any space into a beautiful and unique environment.





**DREAM
BIG
WE'RE HERE**

Sales Representative



Unit 3, Hytech Industrial Estate, 61 Collingham Street, Manchester
M8 8RQ United Kingdom

0161 850 9594 | contact@clarityLED.co.uk